



OUTLINE OF THE COMPANY
FUTAWA FLANGE WORKS CO., LTD.

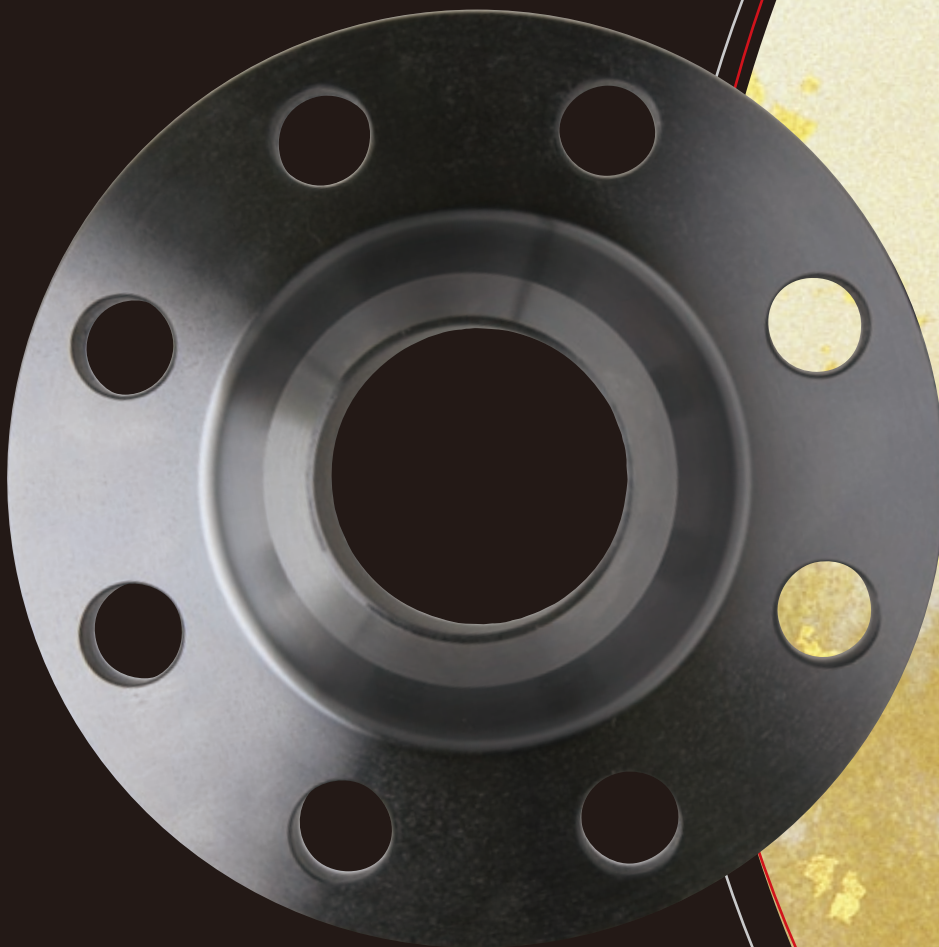


Leveraging 60-Years of Know-How Soaring to a New Stage

With the goal of contributing to society by delivering the best quality products faster and at lower cost, Futawa Flange Works is committed to maintaining:

- Reliability in its materials
- Consistent processing technology
- Complete traceability
- Customer-oriented technical support

Futawa Flange Works fulfills these commitments by ensuring a transparent system of quality control for its customers.



for Future Advantage

Top Message

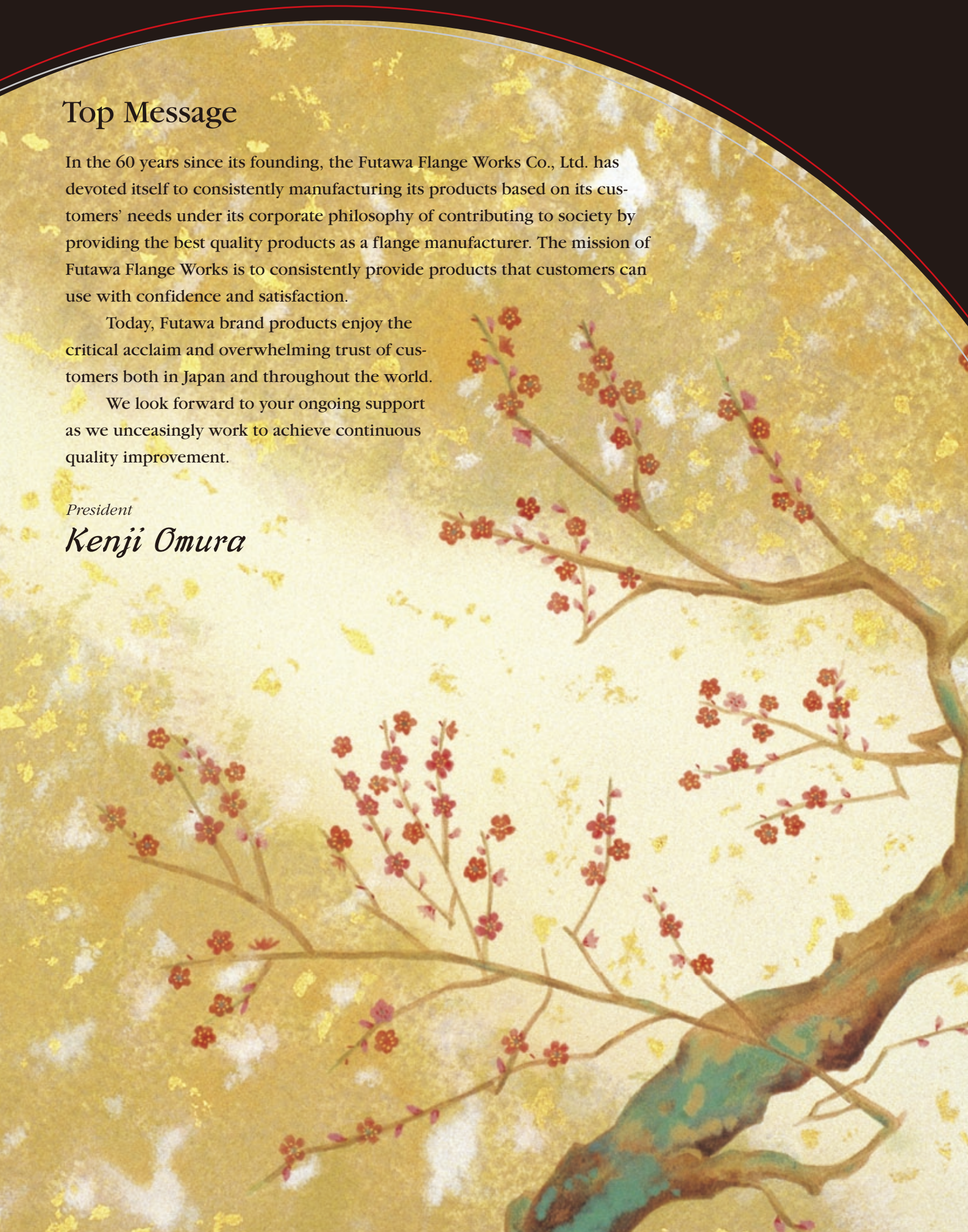
In the 60 years since its founding, the Futawa Flange Works Co., Ltd. has devoted itself to consistently manufacturing its products based on its customers' needs under its corporate philosophy of contributing to society by providing the best quality products as a flange manufacturer. The mission of Futawa Flange Works is to consistently provide products that customers can use with confidence and satisfaction.

Today, Futawa brand products enjoy the critical acclaim and overwhelming trust of customers both in Japan and throughout the world.

We look forward to your ongoing support as we unceasingly work to achieve continuous quality improvement.

President

Kenji Omura



Futawa Flange Works supplies a wide array of flanges that fulfill the needs of customers around the world. Not only do our products meet the various regional standards of Japan, the United States, Europe and those of the International Organization of Standardization (ISO), they also meet the unique flange standards of customers including those of major international oil companies. Based on an understanding held since our founding that the quality of materials is in itself one of the most important factors determining flange quality, we select materials that are strictly compliant with steel standards of countries throughout the world including Japan and the United States.



Products Range

1) Dimensional Standards

American Standards

ASME	B16.5
	B16.36
	B16.47 Sr-A
	B16.47 Sr-B
	B16.48

MSS	SP44
-----	------

AWWA	C207
------	------

API	SPEC 6A
-----	---------

European Standard

EN 1092-1

ISO Standard

ISO7005 Part I

British Standards

Japanese Standards

JIS	B2220
-----	-------

	G3443-2
--	---------

JPI	JPI-7S-15
-----	-----------

	JPI-7S-43
--	-----------

Customer Standards

Taylor Forge Type

Tube Turn Type

Ladish Type



2) Material Specifications

American Standards

Japanese Standards

Other National Standards

3) Size Ranges

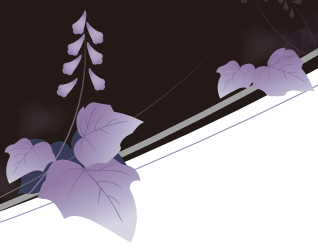
3/8inch(10mm)~60inch(1,500mm)

4) Types

Welding Neck, Slip-on, Socket-Weld, Blind, Threaded, Lap-Joint, Long Neck, Orifice, Spectacle Blind, Spade & Spacer, Plate Type
--

5) Nominal Pressure

Class 150~2,500



Production Flow Chart

In the quality of the products, services and information that we supply, we work ceaselessly to achieve 100% quality assurance so that our business partners and customers can have peace of mind. We pride ourselves on providing to customers a highly transparent system of quality assurance that has been certified by such standards bodies as the International Organization of Standardization (ISO), Japanese Industrial Standards (JIS), Pressure Equipment Directive of EU (PED) and Technical Standards & Safety Authority of Canada (TSSA) as well as by major customers.



Certification

- ISO 9001:2008 No. JQA-QM6184
- JIS (Japanese Industrial Standards) No. JQ0507001/No. JQ0510005
- TSSA (Technical Standards & Safety Authority of Canada) CRN. No. 0B11476.5
- PED (Pressure Equipment Directive 97/23/EC of EU) No. 01 202 J/Q-07 0031



Machinery

Press

Friction press (100-ton)	1 unit
Friction press (250-ton)	1 unit
Crank press (300-ton)	1 unit
Crank press (500-ton)	1 unit
Crank press (800-ton)	2 units
Crank press (1,000-ton)	1 unit
Roll leveler	2 units
Hydraulic leveling press (130-ton)	1 unit

Welding & Cutting

Automatic welder & eye tracer	1 unit
Welding & cutting machine	1 unit
Band sawing machine	5 units
Shearing machine	2 units

Machinery

Lathe

Face lathe	10 units
Single purpose lathe	10 units
Turning lathe	2 units
NC lathe	9 units
Automatic flange making machine	6 lines

Drilling machine

Direct coupled drilling machine (#400)	4 units
Direct coupled drilling machine (#600)	4 units
Multi-spindle drilling machine	9 units
Radial drilling machine	3 units
Double-column drilling center	1 unit

Inspection

Universal tester (RH30)	1 unit
Charpy impact tester	1 unit
Spectroscopic analyzer	1 unit
Hardness tester (brinell, shore)	1 unit
Steel composition checker	1 unit
Calipers checker	1 unit

Company's Profile

Business Outline

Manufacturing & sale of steel plate flanges, forged steel flanges, and special steel flanges

Starting of Business

August, 1949

Foundation of the Company

July, 1951

Name of President

Kenji Omura

Capital

¥30,600,000 (US\$360,000)

Bankers

Mizuho Bank, Ltd., Yotsubashi Branch
The Shoko Chukin Bank Ltd. Osaka Branch
The Kiyo Bank, Ltd., Kishiwada Branch
The Bank of Nagoya, Ltd., Osaka Branch
The Kinki Osaka Bank, Ltd., Head Office

Annual Turnover

Japanese Yen 1,000 million

Number of Employees

30

Address

6-3-6 Isonokami-cho, Kishiwada City, Osaka
Prefecture, 596-0001 Japan
URL : <http://www.futawa-flange.com>
Telephone : +81-72-436-1001
Fax : +81-72-437-1005

Business Reference

Idemitsu Kosan Co., Ltd.
Cosmo Oil Co., Ltd.
Tokyo Gas Co., Ltd.
Osaka Gas Co., Ltd.
Mitsubishi Heavy Industries, Ltd.
Toray Industries, Inc.
Hitachi Plant Technologies, Ltd.
Nippon Steel Corporation
Tokyo Electric Power Company, Incorporated
Japan Energy Corporation
Sumitomo Chemical Co., Ltd.

History

2010

Oct.

Factory authorized to display Japanese Industrial Standards logo on its products (No. JQ0510005)

2007

Sept.

Acquired Pressure Equipment Directive (PED 97/23/EC of EU) certification (No. 01 202 J/Q-07 0031)

2007

May

Acquired Technical Standards & Safety Authority of Canada (TSSA) certification (No. 0B11476.5)

2007

Mar.

Factory authorized to display Japanese Industrial Standards (new standards) logo on its products (No. JQ0507001)

2003

Jan.

Awarded patent for welded flange (No. 3391696)

2001

Mar.

Acquired ISO 9001:2000 certification

1991

Mar.

Factory authorized to display Japanese Industrial Standards logo on its products

1980

Feb.

Factory approved by Nippon Kaiji Kyokai (Japanese Marine Association)

1967

Aug.

Built new factory in Kishiwada City, Osaka Prefecture

1951

July

Founded Futawa Flange Works Co., Ltd. in Osaka City

1949

Aug.

Started flange manufacturing in Osaka City

Without a reliable piping system to deliver water, oil, gas and chemical products, it is impossible to ensure a comfortable living environment for communities and maintain a safe production system for companies. Futawa Flange Works contributes to the development of society through the supply of dependable products.





FUTAWA FLANGE WORKS CO., LTD.

6-3-6 Isonokami-cho, Kishiwada City, Osaka Prefecture, 596-0001 Japan
URL : <http://www.futawa-flange.com>

E 65684

